

5ml VARIABLE VACCINATOR AUTO BMV MODEL 013



The 5ml Automatic BMV Model 013, is a precision instrument, with a high standard of finish, designed for mass treatment of livestock. Given normal care it will last indefinitely.

As components in this instrument may be affected by solvents in some commonly used farm chemicals no responsibility will be accepted by the manufacturer should the instrument be used with such products.

INSTRUCTIONS FOR USE

► Sterilisation Instructions

It is essential that this instrument, and a supply of needles, be thoroughly sterilized before each use. A common method of sterilization is as follows:

1. Turn applicator upside down and place the needle into clean water until draw-off needle is able to draw fluid into the cylinder.
2. Prime instrument and ensure instrument is full of water before sterilising.
3. Wrap instrument in a clean cloth, suspend the complete instrument and needles in boiling water for 10 – 20 minutes.



Suspending the instrument not only makes it easier to remove, but also prevents damage should the container boil dry.

Chemical sterilization with antiseptic solutions is sometimes practised and in such instances the recommendations of the chemical manufacturer should be followed. **DO NOT attempt to sterilize by autoclaving.**

4. Remove instrument from container, wrap dry cloth around the handle and pump dry.

► To set the dose

1. Slacken off dose adjuster lock nut (16).
2. Rotate threaded dose adjuster (17) until the front of the piston aligns with the required calibration on the cylinder.
3. Retighten dose adjuster lock nut (16).

► To Prime

1. Pre-pierce centre of rubber bung on vaccine pack/bottle.

2. Use appropriate bottle locking ring to suit your vaccine bottle or, when using the shroud, simply insert the bottle into the shroud and push down over needle until the bottle neck clicks into place.

3. Attach needle and set syringe to maximum dose.

4. Hold syringe vertically and squeeze to draw vaccine into cylinder. (Holding vertically will ensure all air is expelled.)

5. The syringe is ready for use when a small amount of vaccine appears at the needle tip.



Care must be taken to ensure the liquid does not come into contact with any part of the operators body. Chemicals may cause injury to the operator.

CARE AND MAINTENANCE

► After Use

1. Remove all traces of material from instrument by flushing thoroughly with a hot water detergent mix.
2. Follow with clean, warm water.



DO NOT store your applicator or feed tube full of product. Clean as per the "Care and Maintenance" instructions.

► To Replace Piston Seal Ring

1. Slacken off dose adjuster lock nut as far as possible.
2. Undo lock nut (15).
3. Hold needle mount and withdraw push rod cylinder assembly.
4. Remove cylinder before unscrewing piston.
5. Replace seal ring (13) taking care not to damage the groove.
6. Insert the piston back into cylinder and reassemble.

5ml VARIABLE VACCINATOR AUTO BMV MODEL 013



The 5ml Automatic BMV Model 013, is a precision instrument, with a high standard of finish, designed for mass treatment of livestock. Given normal care it will last indefinitely.

As components in this instrument may be affected by solvents in some commonly used farm chemicals no responsibility will be accepted by the manufacturer should the instrument be used with such products.

INSTRUCTIONS FOR USE

► Sterilisation Instructions

It is essential that this instrument, and a supply of needles, be thoroughly sterilized before each use. A common method of sterilization is as follows:

1. Turn applicator upside down and place the needle into clean water until draw-off needle is able to draw fluid into the cylinder.

2. Prime instrument and ensure instrument is full of water before sterilising.

3. Wrap instrument in a clean cloth, suspend the complete instrument and needles in boiling water for 10 – 20 minutes.



Suspending the instrument not only makes it easier to remove, but also prevents damage should the container boil dry.

Chemical sterilization with antiseptic solutions is sometimes practised and in such instances the recommendations of the chemical manufacturer should be followed. **DO NOT attempt to sterilize by autoclaving.**

4. Remove instrument from container, wrap dry cloth around the handle and pump dry.

► To set the dose

1. Slacken off dose adjuster lock nut (16).
2. Rotate threaded dose adjuster (17) until the front of the piston aligns with the required calibration on the cylinder.
3. Retighten dose adjuster lock nut (16).

► To Prime

1. Pre-pierce centre of rubber bung on vaccine pack/bottle.

2. Use appropriate bottle locking ring to suit your vaccine bottle or, when using the shroud, simply insert the bottle into the shroud and push down over needle until the bottle neck clicks into place.

3. Attach needle and set syringe to maximum dose.

4. Hold syringe vertically and squeeze to draw vaccine into cylinder. (Holding vertically will ensure all air is expelled.)

5. The syringe is ready for use when a small amount of vaccine appears at the needle tip.



Care must be taken to ensure the liquid does not come into contact with any part of the operators body. Chemicals may cause injury to the operator.

CARE AND MAINTENANCE

► After Use

1. Remove all traces of material from instrument by flushing thoroughly with a hot water detergent mix.
2. Follow with clean, warm water.



DO NOT store your applicator or feed tube full of product. Clean as per the "Care and Maintenance" instructions.

► To Replace Piston Seal Ring

1. Slacken off dose adjuster lock nut as far as possible.
2. Undo lock nut (15).
3. Hold needle mount and withdraw push rod cylinder assembly.
4. Remove cylinder before unscrewing piston.
5. Replace seal ring (13) taking care not to damage the groove.
6. Insert the piston back into cylinder and reassemble.

5ml VARIABLE VACCINATOR AUTO BMV MODEL 013



The 5ml Automatic BMV Model 013, is a precision instrument, with a high standard of finish, designed for mass treatment of livestock. Given normal care it will last indefinitely.

As components in this instrument may be affected by solvents in some commonly used farm chemicals no responsibility will be accepted by the manufacturer should the instrument be used with such products.

INSTRUCTIONS FOR USE

► Sterilisation Instructions

It is essential that this instrument, and a supply of needles, be thoroughly sterilized before each use. A common method of sterilization is as follows:

1. Turn applicator upside down and place the needle into clean water until draw-off needle is able to draw fluid into the cylinder.

2. Prime instrument and ensure instrument is full of water before sterilising.

3. Wrap instrument in a clean cloth, suspend the complete instrument and needles in boiling water for 10 – 20 minutes.



Suspending the instrument not only makes it easier to remove, but also prevents damage should the container boil dry.

Chemical sterilization with antiseptic solutions is sometimes practised and in such instances the recommendations of the chemical manufacturer should be followed. **DO NOT attempt to sterilize by autoclaving.**

4. Remove instrument from container, wrap dry cloth around the handle and pump dry.

► To set the dose

1. Slacken off dose adjuster lock nut (16).
2. Rotate threaded dose adjuster (17) until the front of the piston aligns with the required calibration on the cylinder.
3. Retighten dose adjuster lock nut (16).

► To Prime

1. Pre-pierce centre of rubber bung on vaccine pack/bottle.

2. Use appropriate bottle locking ring to suit your vaccine bottle or, when using the shroud, simply insert the bottle into the shroud and push down over needle until the bottle neck clicks into place.

3. Attach needle and set syringe to maximum dose.

4. Hold syringe vertically and squeeze to draw vaccine into cylinder. (Holding vertically will ensure all air is expelled.)

5. The syringe is ready for use when a small amount of vaccine appears at the needle tip.



Care must be taken to ensure the liquid does not come into contact with any part of the operators body. Chemicals may cause injury to the operator.

CARE AND MAINTENANCE

► After Use

1. Remove all traces of material from instrument by flushing thoroughly with a hot water detergent mix.
2. Follow with clean, warm water.



DO NOT store your applicator or feed tube full of product. Clean as per the "Care and Maintenance" instructions.

► To Replace Piston Seal Ring

1. Slacken off dose adjuster lock nut as far as possible.
2. Undo lock nut (15).
3. Hold needle mount and withdraw push rod cylinder assembly.
4. Remove cylinder before unscrewing piston.
5. Replace seal ring (13) taking care not to damage the groove.
6. Insert the piston back into cylinder and reassemble.

Lubricating Instructions

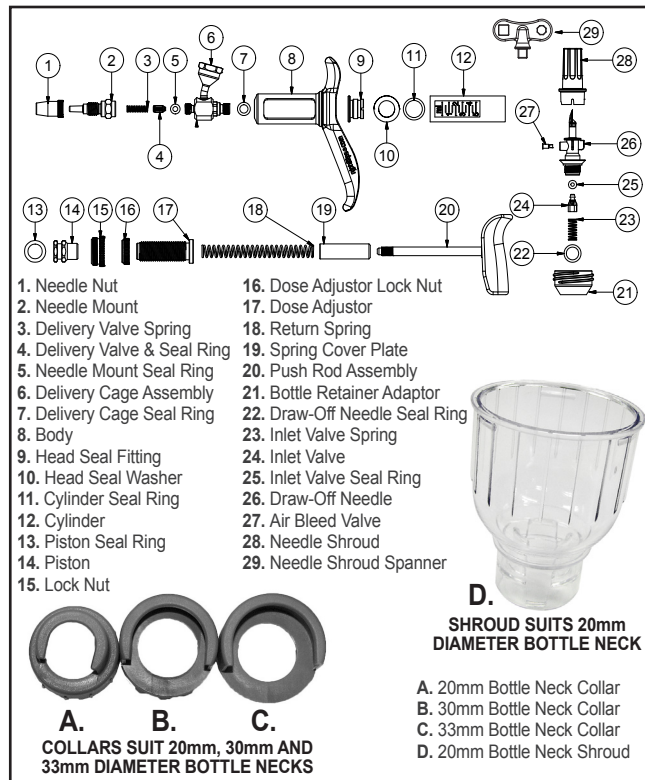
If this instrument becomes sluggish in operation, lubrication is probably required behind the piston.

1. Slacken off dose adjustor lock nut as far as possible.
2. Undo lock nut (15).
3. Hold needle mount and withdraw push rod cylinder assembly.
4. Remove cylinder.
5. Apply a 4 or 5 drops of NJ Phillips Lubricant to the piston seal ring (13).
6. Insert the piston back into cylinder and reassemble.

Service Inlet Valve & Draw-Off Needle

1. Use spanner provided (29) and insert into needle cover (28) locating in the square hole provided.
2. Unscrew draw-off needle to access inlet valve and spring and service or replace draw-off needle.
3. Once serviced, reassemble as per diagram.

IMPORTANT If this instrument becomes sluggish during use, lubricate both in front of and behind the piston with NJ Phillips Lubricant.



PLEASE ORDER BY KIT AND PART NAME.

SPARE PARTS AVAILABLE:

KIT No.	PART NAME	INCLUDES	ILLUSTRATION No.
WX1778	Major Service Kit 5ml	3,4,5,10,11,12,13,22,23,24,25,27,28.	
WX1777	Minor Service Kit 5ml	3,4,5,10,11,13,22,23,24,25,27,28.	
WX1774	Bottle Attachment Kit	22,23,24,25,26,27,28,29,A,B,C.	
600253	Shroud 20mm Diameter Bottle Neck	D.	
WX1781	Conversion Kit (Feedtube Attachment Fitting)	Not Illustrated.	

NJ PHILLIPS PTY LTD ABN 36 000 082 002
ADDRESS: LOCKED BAG 8, GOSFORD, NSW
2250 AUSTRALIA TELEPHONE: +61 2 4340 2044
FAX: +61 2 4340 1991 EMAIL: njp1@njphillips.com.au
MADE IN AUSTRALIA



njphillips.com
Our expertise is in your hands.

AS OUR POLICY IS ONE OF CONTINUOUS IMPROVEMENT THE MANUFACTURER RESERVES THE RIGHT TO ALTER THESE SPECIFICATIONS AT ANY TIME. ALL PRODUCTS PRODUCED BY NJ PHILLIPS PTY LIMITED, ARE IDENTIFIED BY A UNIQUE BATCH NUMBER. THIS IDENTIFICATION NUMBER IS AFFIXED TO THE PRODUCT TO ALLOW TRACEABILITY BY THE MANUFACTURER AND MUST NOT BE REMOVED IF PRODUCT INTEGRITY IS TO BE MAINTAINED.
PAS265 | QL824-R5

Lubricating Instructions

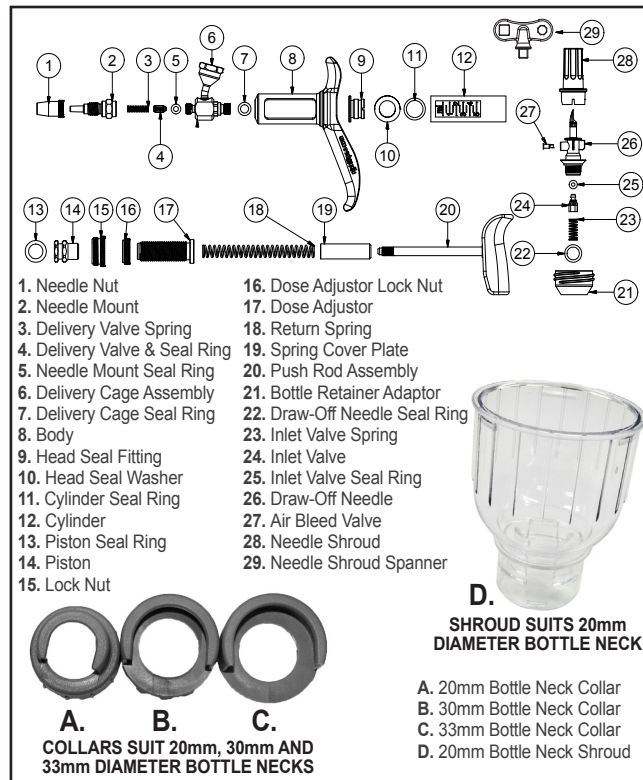
If this instrument becomes sluggish in operation, lubrication is probably required behind the piston.

1. Slacken off dose adjustor lock nut as far as possible.
2. Undo lock nut (15).
3. Hold needle mount and withdraw push rod cylinder assembly.
4. Remove cylinder.
5. Apply a 4 or 5 drops of NJ Phillips Lubricant to the piston seal ring (13).
6. Insert the piston back into cylinder and reassemble.

Service Inlet Valve & Draw-Off Needle

1. Use spanner provided (29) and insert into needle cover (28) locating in the square hole provided.
2. Unscrew draw-off needle to access inlet valve and spring and service or replace draw-off needle.
3. Once serviced, reassemble as per diagram.

IMPORTANT If this instrument becomes sluggish during use, lubricate both in front of and behind the piston with NJ Phillips Lubricant.



PLEASE ORDER BY KIT AND PART NAME.

SPARE PARTS AVAILABLE:

KIT No.	PART NAME	INCLUDES	ILLUSTRATION No.
WX1778	Major Service Kit 5ml	3,4,5,10,11,12,13,22,23,24,25,27,28.	
WX1777	Minor Service Kit 5ml	3,4,5,10,11,13,22,23,24,25,27,28.	
WX1774	Bottle Attachment Kit	22,23,24,25,26,27,28,29,A,B,C.	
600253	Shroud 20mm Diameter Bottle Neck	D.	
WX1781	Conversion Kit (Feedtube Attachment Fitting)	Not Illustrated.	

NJ PHILLIPS PTY LTD ABN 36 000 082 002
ADDRESS: LOCKED BAG 8, GOSFORD, NSW
2250 AUSTRALIA TELEPHONE: +61 2 4340 2044
FAX: +61 2 4340 1991 EMAIL: njp1@njphillips.com.au
MADE IN AUSTRALIA



njphillips.com
Our expertise is in your hands.

AS OUR POLICY IS ONE OF CONTINUOUS IMPROVEMENT THE MANUFACTURER RESERVES THE RIGHT TO ALTER THESE SPECIFICATIONS AT ANY TIME. ALL PRODUCTS PRODUCED BY NJ PHILLIPS PTY LIMITED, ARE IDENTIFIED BY A UNIQUE BATCH NUMBER. THIS IDENTIFICATION NUMBER IS AFFIXED TO THE PRODUCT TO ALLOW TRACEABILITY BY THE MANUFACTURER AND MUST NOT BE REMOVED IF PRODUCT INTEGRITY IS TO BE MAINTAINED.
PAS265 | QL824-R5

Lubricating Instructions

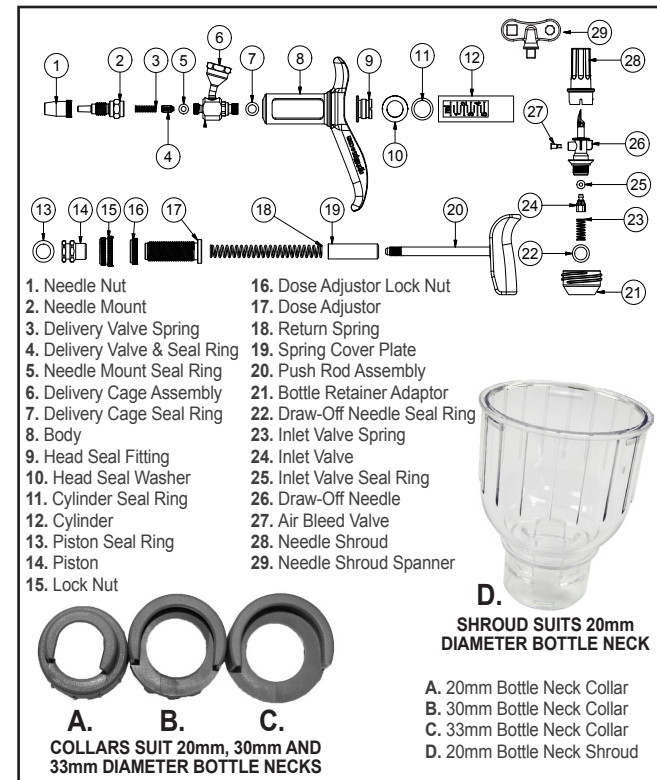
If this instrument becomes sluggish in operation, lubrication is probably required behind the piston.

1. Slacken off dose adjustor lock nut as far as possible.
2. Undo lock nut (15).
3. Hold needle mount and withdraw push rod cylinder assembly.
4. Remove cylinder.
5. Apply a 4 or 5 drops of NJ Phillips Lubricant to the piston seal ring (13).
6. Insert the piston back into cylinder and reassemble.

Service Inlet Valve & Draw-Off Needle

1. Use spanner provided (29) and insert into needle cover (28) locating in the square hole provided.
2. Unscrew draw-off needle to access inlet valve and spring and service or replace draw-off needle.
3. Once serviced, reassemble as per diagram.

IMPORTANT If this instrument becomes sluggish during use, lubricate both in front of and behind the piston with NJ Phillips Lubricant.



PLEASE ORDER BY KIT AND PART NAME.

SPARE PARTS AVAILABLE:

KIT No.	PART NAME	INCLUDES	ILLUSTRATION No.
WX1778	Major Service Kit 5ml	3,4,5,10,11,12,13,22,23,24,25,27,28.	
WX1777	Minor Service Kit 5ml	3,4,5,10,11,13,22,23,24,25,27,28.	
WX1774	Bottle Attachment Kit	22,23,24,25,26,27,28,29,A,B,C.	
600253	Shroud 20mm Diameter Bottle Neck	D.	
WX1781	Conversion Kit (Feedtube Attachment Fitting)	Not Illustrated.	

NJ PHILLIPS PTY LTD ABN 36 000 082 002
ADDRESS: LOCKED BAG 8, GOSFORD, NSW
2250 AUSTRALIA TELEPHONE: +61 2 4340 2044
FAX: +61 2 4340 1991 EMAIL: njp1@njphillips.com.au
MADE IN AUSTRALIA



njphillips.com
Our expertise is in your hands.

AS OUR POLICY IS ONE OF CONTINUOUS IMPROVEMENT THE MANUFACTURER RESERVES THE RIGHT TO ALTER THESE SPECIFICATIONS AT ANY TIME. ALL PRODUCTS PRODUCED BY NJ PHILLIPS PTY LIMITED, ARE IDENTIFIED BY A UNIQUE BATCH NUMBER. THIS IDENTIFICATION NUMBER IS AFFIXED TO THE PRODUCT TO ALLOW TRACEABILITY BY THE MANUFACTURER AND MUST NOT BE REMOVED IF PRODUCT INTEGRITY IS TO BE MAINTAINED.
PAS265 | QL824-R5