

## 2ml VARIABLE AUTOMATIC INJECTOR MODEL 09 WITH LUER MOUNT



The NJ Phillips 2ml Automatic Injector is a precision instrument, with a high quality finish, designed for mass treatment of live stock and poultry with a variety of vaccines and injectable solutions. Given normal care it will last indefinitely. No responsibility will be accepted by the manufacturer should this instrument be used for any purpose than that intended.

### SOME OF ITS MORE OUTSTANDING FEATURES ARE DETAILED BELOW.

#### POSITIVE NEEDLE LOCK

The novel easy-off fitting enables the Luer needles to be easily removed. To attach the needle, simply unscrew the locking nut until the needle hub can be fitted to the tapered mount, then retighten to secure the needle.

#### DOSE ADJUSTMENT

An extremely positive locking mechanism enables doses to be set and locked in position with ease. The cylinder is clearly graduated from 0.5ml to 2ml in increments of 0.5ml.

#### VALVE SYSTEM

Valve components are proven designs that are trouble free and are easily accessible for cleaning.

#### EASE OF STERILIZATION

There is no need to dismantle this instrument when sterilizing. Simply immerse the hand piece in boiling water (see instructions for use) or fill with a suitable chemical sterilant.

#### VISIBILITY OF DOSE

The unique stepped cylinder design provides full dose visibility while at the same time allowing a comfortable length of stroke without sacrificing accuracy.

#### ROBUST CONSTRUCTION

Our research and development team have skilfully combined a quality appearance with durability while keeping weight to a minimum.

#### INSTRUCTIONS FOR USE

1. It is essential that this instrument, and a supply of needles, be thoroughly sterilized before each use. A common method of sterilization is as follows:
  - a. Attach connecting hose to handpiece.
  - b. Wrap cloth around handpiece and draw hot water into the cylinder through the connecting hose.
  - c. Suspend the complete instrument in a container of water and boil, together with the needles, for 10 to 20 minutes.
  - d. Remove instrument from container, wrap cloth around the handle and pump dry.



Suspending the instrument not only makes it easier to remove, but also prevents damage should the container boil dry.

Chemical sterilization with antiseptic solutions is sometimes practised and in such instances the recommendations of the chemical manufacturer should be followed. **DO NOT attempt to sterilize by autoclaving.** It is neither necessary, nor desirable, to dismantle the handle, or any other component, before sterilizing.

2. Prime the instrument **holding it vertically, with the needle pointed upwards**, to ensure the applicator is fully primed.



Care must be taken to ensure the liquid does not come into contact with any part of the operators body. Chemicals may cause injury to the operator.

3. Align front edge of piston with the required dose graduation mark on the cylinder.
4. Test for accuracy by expressing into a properly calibrated measuring glass.

#### CARE AND MAINTENANCE Before Use

As lubricants may evaporate during storage it is advisable to apply NJ Phillips Lubricant to the piston. Unscrew the dose adjustor fully to reveal access to the rear of the piston. This procedure should be followed after sterilization.

#### After Use / When Changing Products

1. Flush the instrument and connecting tube thoroughly with warm water and detergent mix.
2. Re-flush with clean water.
3. Lubricate the instrument by disconnecting the feed tube and drawing a small quantity of NJ Phillips Lubricant through the inlet fitting.
4. Occasionally check the piston seal ring for wear by removing the piston and push rod assembly. Take care not to damage the "O" ring groove when replacing the piston seal ring.

## 2ml VARIABLE AUTOMATIC INJECTOR MODEL 09 WITH LUER MOUNT



The NJ Phillips 2ml Automatic Injector is a precision instrument, with a high quality finish, designed for mass treatment of live stock and poultry with a variety of vaccines and injectable solutions. Given normal care it will last indefinitely. No responsibility will be accepted by the manufacturer should this instrument be used for any purpose than that intended.

### SOME OF ITS MORE OUTSTANDING FEATURES ARE DETAILED BELOW.

#### POSITIVE NEEDLE LOCK

The novel easy-off fitting enables the Luer needles to be easily removed. To attach the needle, simply unscrew the locking nut until the needle hub can be fitted to the tapered mount, then retighten to secure the needle.

#### DOSE ADJUSTMENT

An extremely positive locking mechanism enables doses to be set and locked in position with ease. The cylinder is clearly graduated from 0.5ml to 2ml in increments of 0.5ml.

#### VALVE SYSTEM

Valve components are proven designs that are trouble free and are easily accessible for cleaning.

#### EASE OF STERILIZATION

There is no need to dismantle this instrument when sterilizing. Simply immerse the hand piece in boiling water (see instructions for use) or fill with a suitable chemical sterilant.

#### VISIBILITY OF DOSE

The unique stepped cylinder design provides full dose visibility while at the same time allowing a comfortable length of stroke without sacrificing accuracy.

#### ROBUST CONSTRUCTION

Our research and development team have skilfully combined a quality appearance with durability while keeping weight to a minimum.

#### INSTRUCTIONS FOR USE

1. It is essential that this instrument, and a supply of needles, be thoroughly sterilized before each use. A common method of sterilization is as follows:
  - a. Attach connecting hose to handpiece.
  - b. Wrap cloth around handpiece and draw hot water into the cylinder through the connecting hose.
  - c. Suspend the complete instrument in a container of water and boil, together with the needles, for 10 to 20 minutes.
  - d. Remove instrument from container, wrap cloth around the handle and pump dry.



Suspending the instrument not only makes it easier to remove, but also prevents damage should the container boil dry.

Chemical sterilization with antiseptic solutions is sometimes practised and in such instances the recommendations of the chemical manufacturer should be followed. **DO NOT attempt to sterilize by autoclaving.** It is neither necessary, nor desirable, to dismantle the handle, or any other component, before sterilizing.

2. Prime the instrument **holding it vertically, with the needle pointed upwards**, to ensure the applicator is fully primed.



Care must be taken to ensure the liquid does not come into contact with any part of the operators body. Chemicals may cause injury to the operator.

3. Align front edge of piston with the required dose graduation mark on the cylinder.
4. Test for accuracy by expressing into a properly calibrated measuring glass.

#### CARE AND MAINTENANCE Before Use

As lubricants may evaporate during storage it is advisable to apply NJ Phillips Lubricant to the piston. Unscrew the dose adjustor fully to reveal access to the rear of the piston. This procedure should be followed after sterilization.

#### After Use / When Changing Products

1. Flush the instrument and connecting tube thoroughly with warm water and detergent mix.
2. Re-flush with clean water.
3. Lubricate the instrument by disconnecting the feed tube and drawing a small quantity of NJ Phillips Lubricant through the inlet fitting.
4. Occasionally check the piston seal ring for wear by removing the piston and push rod assembly. Take care not to damage the "O" ring groove when replacing the piston seal ring.

## 2ml VARIABLE AUTOMATIC INJECTOR MODEL 09 WITH LUER MOUNT



The NJ Phillips 2ml Automatic Injector is a precision instrument, with a high quality finish, designed for mass treatment of live stock and poultry with a variety of vaccines and injectable solutions. Given normal care it will last indefinitely. No responsibility will be accepted by the manufacturer should this instrument be used for any purpose than that intended.

### SOME OF ITS MORE OUTSTANDING FEATURES ARE DETAILED BELOW.

#### POSITIVE NEEDLE LOCK

The novel easy-off fitting enables the Luer needles to be easily removed. To attach the needle, simply unscrew the locking nut until the needle hub can be fitted to the tapered mount, then retighten to secure the needle.

#### DOSE ADJUSTMENT

An extremely positive locking mechanism enables doses to be set and locked in position with ease. The cylinder is clearly graduated from 0.5ml to 2ml in increments of 0.5ml.

#### VALVE SYSTEM

Valve components are proven designs that are trouble free and are easily accessible for cleaning.

#### EASE OF STERILIZATION

There is no need to dismantle this instrument when sterilizing. Simply immerse the hand piece in boiling water (see instructions for use) or fill with a suitable chemical sterilant.

#### VISIBILITY OF DOSE

The unique stepped cylinder design provides full dose visibility while at the same time allowing a comfortable length of stroke without sacrificing accuracy.

#### ROBUST CONSTRUCTION

Our research and development team have skilfully combined a quality appearance with durability while keeping weight to a minimum.

#### INSTRUCTIONS FOR USE

1. It is essential that this instrument, and a supply of needles, be thoroughly sterilized before each use. A common method of sterilization is as follows:
  - a. Attach connecting hose to handpiece.
  - b. Wrap cloth around handpiece and draw hot water into the cylinder through the connecting hose.
  - c. Suspend the complete instrument in a container of water and boil, together with the needles, for 10 to 20 minutes.
  - d. Remove instrument from container, wrap cloth around the handle and pump dry.



Suspending the instrument not only makes it easier to remove, but also prevents damage should the container boil dry.

Chemical sterilization with antiseptic solutions is sometimes practised and in such instances the recommendations of the chemical manufacturer should be followed. **DO NOT attempt to sterilize by autoclaving.** It is neither necessary, nor desirable, to dismantle the handle, or any other component, before sterilizing.

2. Prime the instrument **holding it vertically, with the needle pointed upwards**, to ensure the applicator is fully primed.



Care must be taken to ensure the liquid does not come into contact with any part of the operators body. Chemicals may cause injury to the operator.

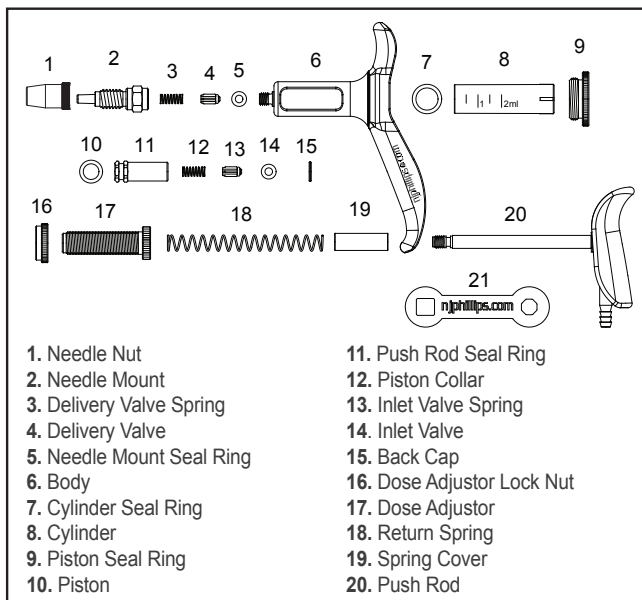
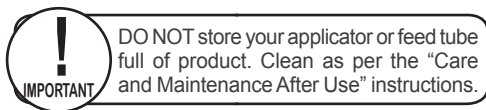
3. Align front edge of piston with the required dose graduation mark on the cylinder.
4. Test for accuracy by expressing into a properly calibrated measuring glass.

#### CARE AND MAINTENANCE Before Use

As lubricants may evaporate during storage it is advisable to apply NJ Phillips Lubricant to the piston. Unscrew the dose adjustor fully to reveal access to the rear of the piston. This procedure should be followed after sterilization.

#### After Use / When Changing Products

1. Flush the instrument and connecting tube thoroughly with warm water and detergent mix.
2. Re-flush with clean water.
3. Lubricate the instrument by disconnecting the feed tube and drawing a small quantity of NJ Phillips Lubricant through the inlet fitting.
4. Occasionally check the piston seal ring for wear by removing the piston and push rod assembly. Take care not to damage the "O" ring groove when replacing the piston seal ring.

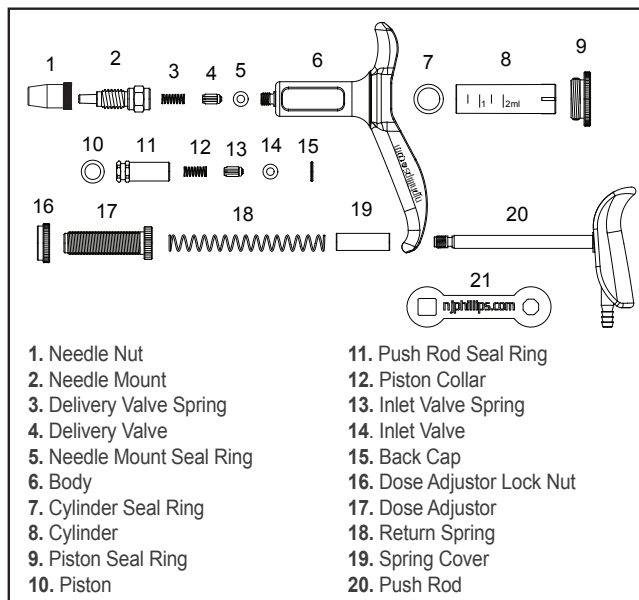
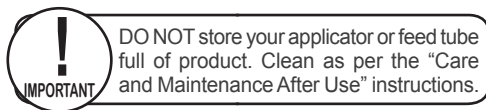


- |                           |                            |
|---------------------------|----------------------------|
| 1. Needle Nut             | 11. Push Rod Seal Ring     |
| 2. Needle Mount           | 12. Piston Collar          |
| 3. Delivery Valve Spring  | 13. Inlet Valve Spring     |
| 4. Delivery Valve         | 14. Inlet Valve            |
| 5. Needle Mount Seal Ring | 15. Back Cap               |
| 6. Body                   | 16. Dose Adjustor Lock Nut |
| 7. Cylinder Seal Ring     | 17. Dose Adjustor          |
| 8. Cylinder               | 18. Return Spring          |
| 9. Piston Seal Ring       | 19. Spring Cover           |
| 10. Piston                | 20. Push Rod               |

#### PLEASE ORDER BY KIT AND PART NAME

##### SPARE PARTS AVAILABLE:

KIT No.	PART NAME	INCLUDES ILLUSTRATION No.
WX750	Major Service Kit	3,4,5,7,8,10,12,13,14,18.
WX1062	Minor Service Kit	3,4,5,7,10,12,13,14,18.

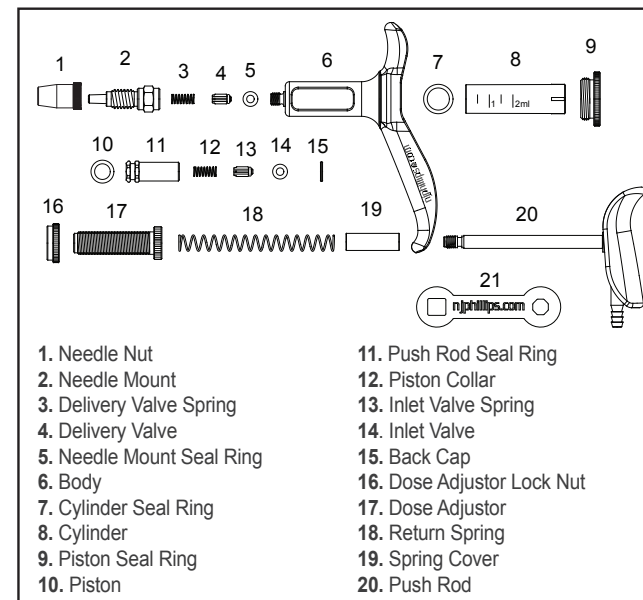
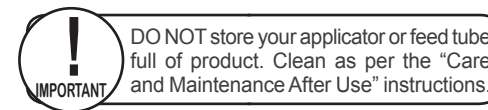


- |                           |                            |
|---------------------------|----------------------------|
| 1. Needle Nut             | 11. Push Rod Seal Ring     |
| 2. Needle Mount           | 12. Piston Collar          |
| 3. Delivery Valve Spring  | 13. Inlet Valve Spring     |
| 4. Delivery Valve         | 14. Inlet Valve            |
| 5. Needle Mount Seal Ring | 15. Back Cap               |
| 6. Body                   | 16. Dose Adjustor Lock Nut |
| 7. Cylinder Seal Ring     | 17. Dose Adjustor          |
| 8. Cylinder               | 18. Return Spring          |
| 9. Piston Seal Ring       | 19. Spring Cover           |
| 10. Piston                | 20. Push Rod               |

#### PLEASE ORDER BY KIT AND PART NAME

##### SPARE PARTS AVAILABLE:

KIT No.	PART NAME	INCLUDES ILLUSTRATION No.
WX750	Major Service Kit	3,4,5,7,8,10,12,13,14,18.
WX1062	Minor Service Kit	3,4,5,7,10,12,13,14,18.



- |                           |                            |
|---------------------------|----------------------------|
| 1. Needle Nut             | 11. Push Rod Seal Ring     |
| 2. Needle Mount           | 12. Piston Collar          |
| 3. Delivery Valve Spring  | 13. Inlet Valve Spring     |
| 4. Delivery Valve         | 14. Inlet Valve            |
| 5. Needle Mount Seal Ring | 15. Back Cap               |
| 6. Body                   | 16. Dose Adjustor Lock Nut |
| 7. Cylinder Seal Ring     | 17. Dose Adjustor          |
| 8. Cylinder               | 18. Return Spring          |
| 9. Piston Seal Ring       | 19. Spring Cover           |
| 10. Piston                | 20. Push Rod               |

#### PLEASE ORDER BY KIT AND PART NAME

##### SPARE PARTS AVAILABLE:

KIT No.	PART NAME	INCLUDES ILLUSTRATION No.
WX750	Major Service Kit	3,4,5,7,8,10,12,13,14,18.
WX1062	Minor Service Kit	3,4,5,7,10,12,13,14,18.



**njphillips.com**  
*Our expertise is in your hands.*

**NJ PHILLIPS PTY LTD** ABN 36 000 082 002  
**ADDRESS:** LOCKED BAG 8, GOSFORD, NSW 2250 AUSTRALIA  
**TELEPHONE:** +61 2 4340 2044 **FAX:** +61 2 4340 1991  
**EMAIL:** njp1@njphillips.com.au **MADE IN AUSTRALIA**

AS OUR POLICY IS ONE OF CONTINUOUS IMPROVEMENT THE MANUFACTURER RESERVES THE RIGHT TO ALTER THESE SPECIFICATIONS AT ANY TIME. ALL PRODUCTS PRODUCED BY NJ PHILLIPS PTY LIMITED, ARE IDENTIFIED BY A UNIQUE BATCH NUMBER. THIS IDENTIFICATION NUMBER IS AFFIXED TO THE PRODUCT TO ALLOW TRACEABILITY BY THE MANUFACTURER AND MUST NOT BE REMOVED IF PRODUCT INTEGRITY IS TO BE MAINTAINED.

PAS686, EAS977, EAS1468, EAS1288 | QL752-R5



**njphillips.com**  
*Our expertise is in your hands.*

**NJ PHILLIPS PTY LTD** ABN 36 000 082 002  
**ADDRESS:** LOCKED BAG 8, GOSFORD, NSW 2250 AUSTRALIA  
**TELEPHONE:** +61 2 4340 2044 **FAX:** +61 2 4340 1991  
**EMAIL:** njp1@njphillips.com.au **MADE IN AUSTRALIA**

AS OUR POLICY IS ONE OF CONTINUOUS IMPROVEMENT THE MANUFACTURER RESERVES THE RIGHT TO ALTER THESE SPECIFICATIONS AT ANY TIME. ALL PRODUCTS PRODUCED BY NJ PHILLIPS PTY LIMITED, ARE IDENTIFIED BY A UNIQUE BATCH NUMBER. THIS IDENTIFICATION NUMBER IS AFFIXED TO THE PRODUCT TO ALLOW TRACEABILITY BY THE MANUFACTURER AND MUST NOT BE REMOVED IF PRODUCT INTEGRITY IS TO BE MAINTAINED.

PAS686, EAS977, EAS1468, EAS1288 | QL752-R5



**njphillips.com**  
*Our expertise is in your hands.*

**NJ PHILLIPS PTY LTD** ABN 36 000 082 002  
**ADDRESS:** LOCKED BAG 8, GOSFORD, NSW 2250 AUSTRALIA  
**TELEPHONE:** +61 2 4340 2044 **FAX:** +61 2 4340 1991  
**EMAIL:** njp1@njphillips.com.au **MADE IN AUSTRALIA**

AS OUR POLICY IS ONE OF CONTINUOUS IMPROVEMENT THE MANUFACTURER RESERVES THE RIGHT TO ALTER THESE SPECIFICATIONS AT ANY TIME. ALL PRODUCTS PRODUCED BY NJ PHILLIPS PTY LIMITED, ARE IDENTIFIED BY A UNIQUE BATCH NUMBER. THIS IDENTIFICATION NUMBER IS AFFIXED TO THE PRODUCT TO ALLOW TRACEABILITY BY THE MANUFACTURER AND MUST NOT BE REMOVED IF PRODUCT INTEGRITY IS TO BE MAINTAINED.

PAS686, EAS977, EAS1468, EAS1288 | QL752-R5